



THE CENTRUM IS UNDERGOING A TRANSFORMATION INSPIRED BY THE VISION TO BECOME THE HOME TO DALLAS' MOST FORWARD THINKING FRESH-MINDED BUSINESSES AND ENTREPRENEURS.

NEW!

- Roof Deck
- Fitness Center
- Multiple Indoor/Outdoor Collaborative Spaces

AVAILABILITIES (Please call for rate quotes)

Suite 109	12,848 RSF	Internal stairwell to #250 for 24,606 total sf; Oak Lawn frontage
Suite 195	16,689 RSF	Courtyard exposure; exclusive lobby entrance available
Suite 215	12,693 RSF	
Suite 250	11,758 RSF	Internal stairwell to #109 for 24,606 total sf
Suite 390	22,312 RSF	Creative White-Box; private balconies
Suite 300/420	43,260 RSF	Creative space with mezzanine
Suite 430	12,773 RSF	Creative White-Box; contiguous with #450 for 21,609 total sf
Suite 450	8,836 RSF	Creative White-Box; contiguous with #430 for 21,609 total sf
Suite 530	2,136 RSF	Amenity floor
Suite 560	1,976 RSF	Amenity floor
Suite 610	1,889 RSF	Creative Spec Suite
Suite 620	6,426 RSF	Available Now; contiguous to #650 for 11,325 total sf
Suite 650	4,899 RSF	Available 10/1/16; contiguous to #620 for 11,325 total sf



▲ LOBBY

▼ SPEC SUITE



FOR LEASING INFORMATION, CONTACT:



Kim Brooks

972.361.1122

kim.brooks@transwestern.com



Nathan Durham

972.774.2503

nathan.durham@transwestern.com

Fletcher Cordell

972.361.1121

fletcher.cordell@transwestern.com



THE CENTRUM

BUILDING FEATURES

- » Premier downtown views
- » Expansive courtyard
- » On-site fitness center
- » On-site management
- » 24-hour courtesy patrol
- » 24/7 card access system to garage and building
- » Covered parking with card key access
- » Restaurants, including Steel and Mattito's
- » 6 minute drive from Dallas Love Field

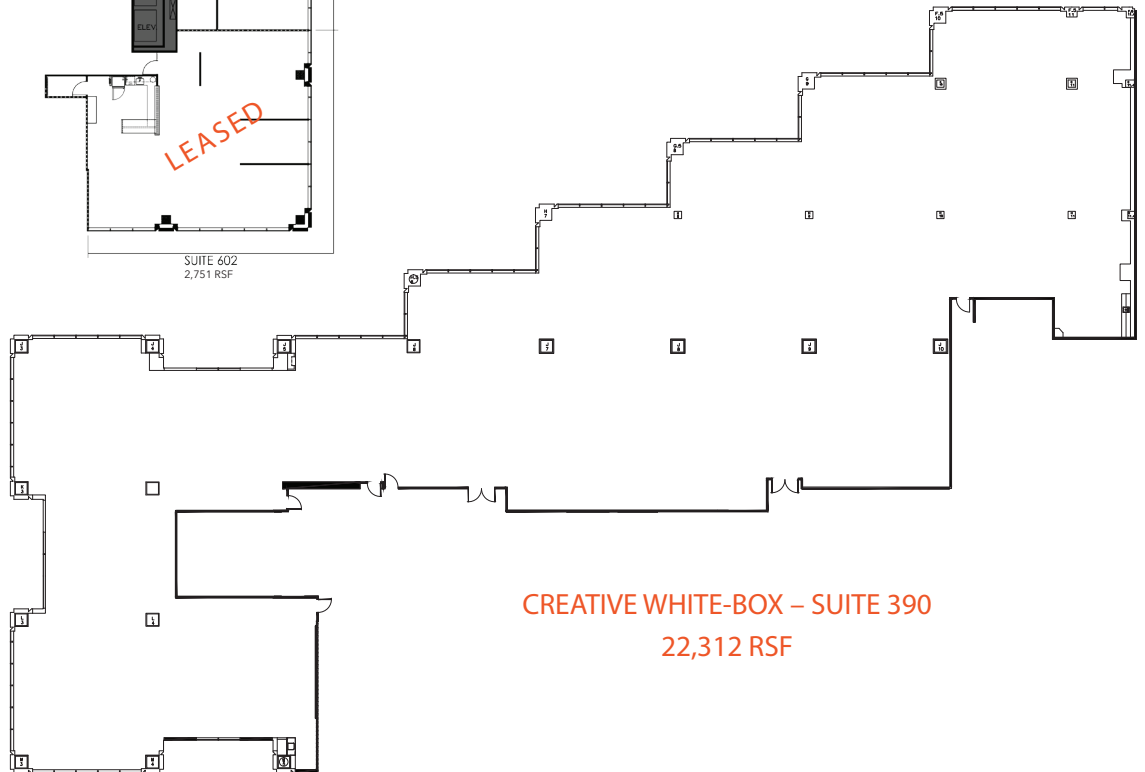
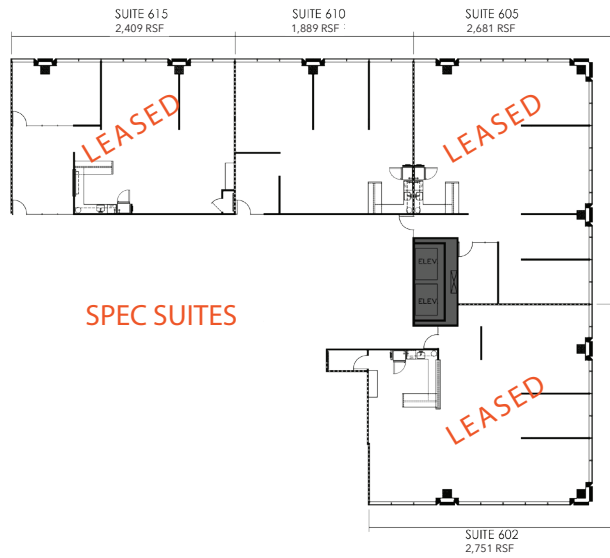
Walk Score
93

Highest Walk Score in Uptown!
Surrounded by 22 Restaurants, 2
Hotels and it's only a 10 minute
walk from Katy Trail.



▲ TENANT LOUNGE

▼ ROOF DECK



FOR LEASING INFORMATION, CONTACT:



Kim Brooks

972.361.1122

kim.brooks@transwestern.com



Nathan Durham

972.774.2503

nathan.durham@transwestern.com

Fletcher Cordell

972.361.1121

fletcher.cordell@transwestern.com